

Daily Summary for Amman Stock Exchange

1- VALUE TRADED (JD)

	2018	2019	NET CHANGE	CHANGE (%)
Daily	2,605,246	3,921,907	1,316,661	50.54%
Cumulative(1/5-13/5)	48,287,371	31,340,409	-16,946,962	-35.10%
Cumulative(2/1-13/5)	547,022,496	519,466,953	-27,555,543	-5.04%

2- NO. OF SHARES TRADED

	2018	2019	NET CHANGE	CHANGE (%)
Daily	3,226,038	3,704,277	478,239	14.82%
Cumulative(1/5-13/5)	37,898,376	25,751,287	-12,147,089	-32.05%
Cumulative(2/1-13/5)	461,367,759	387,304,347	-74,063,412	-16.05%

3- NO. OF TRANSACTIONS

	2018	2019	NET CHANGE	CHANGE (%)
Daily	1,507	1,861	354	23.49%
Cumulative(1/5-13/5)	19,839	12,769	-7,070	-35.64%
Cumulative(2/1-13/5)	220,433	176,582	-43,851	-19.89%

4- SOME FINANCIAL RATIOS FOR THE ASE (13/5/2019)

SECTOR	P/E	P/BV	DIVIDEND YIELD (%)	TURNOVER (%)
FINANCIAL	11.723	1.036	5.506	0.059
SERVICES	16.186	1.093	5.573	0.028
INDUSTRY	18.230	1.299	4.204	0.086
OVERALL	11.962	1.104	5.565	0.055

5- STOCK PRICE INDEX WEIGHTED BY FREE FLOAT MARKET CAPITALIZATION (1999=1000)

	SUNDAY 12/05/2019	MONDAY 13/05/2019	% CHANGE	
			DAY BEFORE	YTD
GENERAL	1819.9	1829.8	0.54%	-4.14%
FINANCIAL	2529.8	2550.6	0.82%	-3.85%
SERVICES	1213.9	1211.8	-0.18%	-5.32%
INDUSTRY	1829.1	1831.6	0.14%	-2.72%

6- STOCK PRICE INDEX WEIGHTED BY MARKET CAPITALIZATION (1991=1000)

	SUNDAY 12/05/2019	MONDAY 13/05/2019	% CHANGE	
			DAY BEFORE	YTD
GENERAL	3572.7	3612.3	1.11%	-4.87%
BANKS	7581.9	7711.6	1.71%	-6.48%
INSURANCE	1327.8	1325.7	-0.15%	-3.69%
SERVICES	734.9	735.4	0.07%	-7.70%
INDUSTRY	2358.2	2359.7	0.07%	2.09%

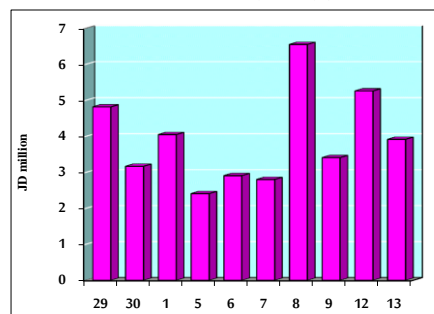
7- STOCK PRICE MARKET INDEX WEIGHTED BY FREE FLOAT MARKET CAP. (2012=1000)

	SUNDAY 12/05/2019	MONDAY 13/05/2019	% CHANGE	
			DAY BEFORE	YTD
FIRST MARKET	963.8	968.8	0.52%	-4.20%
SECOND MARKET	817.4	820.4	0.37%	-1.35%

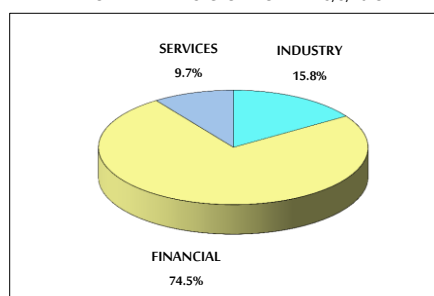
8- MARKET CAPITALIZATION (JD)

	2018	2019	NET CHANGE	CHANGE (%)
ASE MARKET CAPITALIZATION	15,220,600,510	15,371,785,318	151,184,808	0.99%

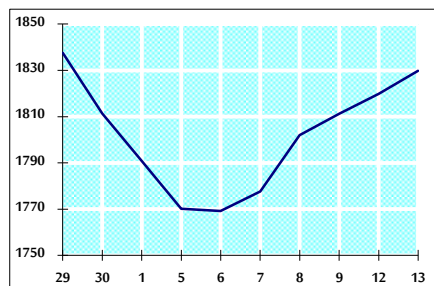
VALUE TRADED FROM 29/4 TO 13/5/2019



VALUE TRADED BY SECTOR MONDAY 13/5/2019



GENERAL FREE FLOAT PRICE INDEX FROM 29/4 TO 13/5/2019



GENERAL PRICE INDEX FROM 29/4 TO 13/5/2019

